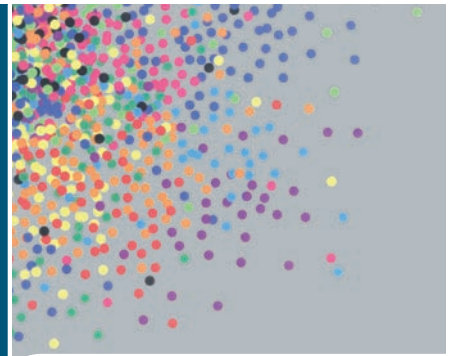


Reliability, safety and efficiency

Polyester bobbin wound and fiberglass technology applied to the industrial filters used in large size installations

01



FIBERPOOL
división industrial

Industrial bobbin wound polyester and fiberglass sand filters

Light structure but high pressure resistance (up to 6 bar max. working pressure)

Corrosion resistance, even with ozone applications (tank with a special PVC internal lining)

Available as both, vertical and horizontal construction

Available diameters: from 1050 mm up to 3000 mm.

Arm collectors or nozzle plate filtration system

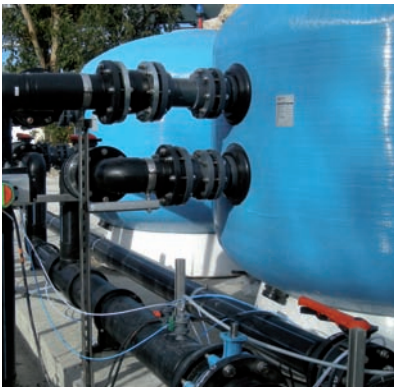
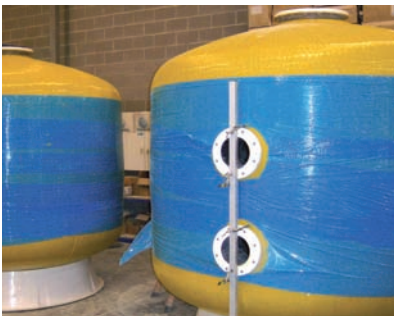
PVC flange connections

Filtration bed depth: 1 m, 1,2 m or 1,5 m

Options:
Side manholes, sight glasses, manometer panels and air relief valves

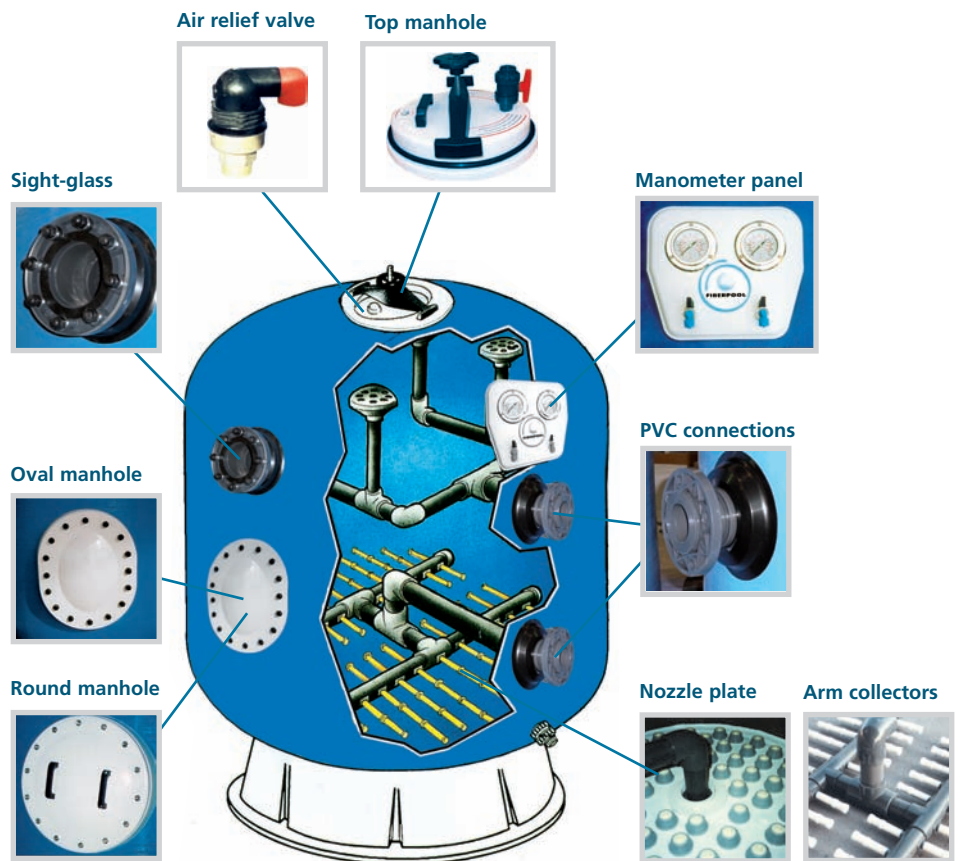
Manual and Automatic butterfly valves batteries





Fiberpool Internacional, S. L., we are specialist in the production of bobbin wound polyester and fiberglass sand filters for large size Installations, such as commercial and communal swimming pools, acuatic parks, water treatment plants, aquariums, etc. You can find our equipment in more than 60 countries over the world. In our factory we use the most appropriate methods to insure a environment friendly production with preventive measures for securing labour safety. Our industrial filters production range, includes vertical and horizontal filters. The vertical filters are manufactured as standard with arm collectors or as high performance filters with arm collectors or nozzle plate. The maximum operating presures are: 2,5 bar, 4 bar and 6 bar. The horizontal filters are manufactured with arm collectors and the maximum operating pressures are: 2,5 bar and 4 bar. Our technical team will be pleased to suggest to you the filters that best adapt to your specific project, modifying our standard filters to your requirements.

Construction details and options



High pressure
resistance flexible body
Less weight
Special sizes
High chemical resistance
Food grade
Internal PVC liner to work
with ozone



Standard and High performance vertical filters

The standard vertical filters are manufactured with arm collectors, 1 m bed depth, top manhole with an air relief valve, sand and water drain, pressure gauge in the tank and inlet & outlet PVC flange connections.

The high performance vertical filters can be supplied with arm collectors or nozzle plate, and 1,2 m or 1,5 m bed depth. Other characteristics like the standard model.

Max. operating pressure:
2,5 bar – 4 bar and 6 bar
**Diameters from 1050 mm
to 3000 mm.**

**Filters with raised
supports for down
connection**

**Filters according to
DIN 19643 & 19605**

**Contact chambers for
Ozone mixing**





The horizontal filters provide a larger filtration surface and its sizes allow the installation in height limited spaces

Horizontal bobbin wound filters



The horizontal filters are equipped with arm collectors, bed depth:

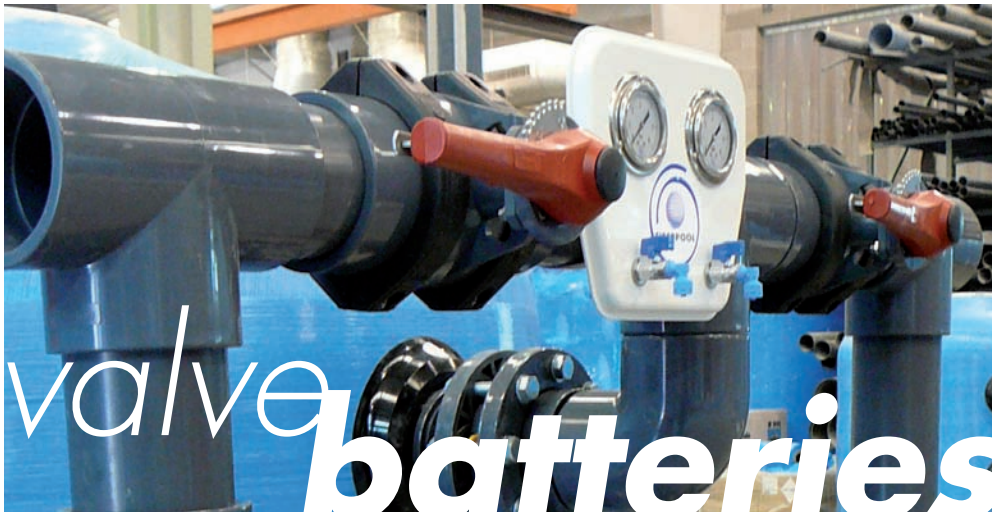
**0,6 m by 1050 & 1200 mm,
0,8 m by 1400 & 1600 mm,
1,0 m by 1800 & 2000 mm,
1,2 m by 2350 & 2500 mm**
diameter.

Max. operating pressure:
2,5 bar and 4 bar

Standard Lengths:

Ø 1050 from 1500 to 3000mm,
Ø 1200 from 2000 to 3000mm,
Ø 1400 from 2000 to 3000mm,
Ø 1600 from 2000 to 3000mm,
Ø 1800 from 2500 to 4000mm,
Ø 2000 from 2500 to 5000mm,
Ø 2350 from 3000 to 4000mm,
Ø 2500 from 4000 to 5000mm.

With manhole at one end,
air relief valve, sand &
water drain and PVC flange
connections.



valve batteries

FIBERPOOL
división industrial

Manual valve battery sets

The manual valve batteries are equipped with 5 PVC butterfly valves with handle, mounted in a flange **NETVITC** system for easy mounting and dismantling operation in case of damage.

Automatic valve battery sets with electric actuator

In that case, the PVC butterfly valves are equipped with a robust and efficient electric actuator, that connected to a control box, allows a correct function of the system.

The power supply of the actuators can be 220 V or 24 V.

To prevent a power supply breakdown, we can supply a safety block.

Automatic valve battery sets with pneumatic actuator

This is the most solid and economic automatic system. We use double act pneumatic actuators with polyamid body, adequate to work in the strongest ambient conditions.

As an option, we can supply the complete set, connected to our electronic control box and including a small air compressor mounted on the battery.

Valve battery set for polyester filters

The **FIBERPOOL** valve battery sets are supplied complete assembled, including a manometer panel and supports (up 110mm).

Can be equipped with manual or automatic operation.

Normally, we use PVC pipes & fittings, but if required, we can supply it in PP (polipropylene).

The valve batteries are, usually, equipped with 5 butterfly valves, but can also be mounted according to the customers request, for example: 1 battery set for 2 or more filters, with more or less valves, different positions, sizes, etc.





FIBERPOOL
Internacional, S.L.

Ponent, 3-5-7
P. I. Sant Pere Molanta
08799 Olérdola
Barcelona
SPAIN

TEL. +34 938 18 00 16
FAX. +34 938 18 07 18

www.fiberpool.com
fiberpool@fiberpool.com